

Basic Dysrhythmia Review

normal sinus rhythm (NSR) Criteria: (PR, QRS, QT, Rhythm: reg or irreg)

1 P-wave for Every QRS, REGULAR rhythm

PR: 0.12-0.20

QRS: 0.06-0.10 BBB = > 0.12

QT: 0.36-0.44

BPM: 60-100



learnexams

Sinus Bradycardia Criteria: (PR, QRS, QT, Rhythm: reg/irreg)

PR: 0.12-0.20

QRS: 0.06-0.10

QT: 0.36-0.44

BPM: < 60 (Reg. rate)

Tx: Atropine 0.5mg, Pace, Dopamine 2-10 mcg/kg/min, Epie 2-10 mcg/min



Sinus Tachycardia Criteria: (PR, QRS, QT, Rhythm: reg/irreg)

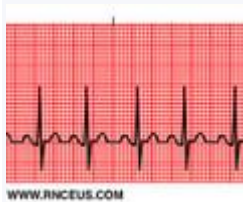
PR: 0.12-0.20

QRS: 0.06-0.10

QT: 0.36-0.44

BPM: 100-150 (Reg. rate, P wave may merge with T-wave)

Cause: fear, anxiety, hypoxia, sepsis, hypovolemia, infection



learnexams

Sinus Arrhythmia Criteria: (PR, QRS, QT, Rhythm: reg/irreg)

PR: 0.12-0.20

QRS: 0.06-0.10

QT: 0.36-0.44

BPM: HR increase w/ inspiration, HR decrease w/expiration

P-P interval lengthen and shorten with respirations

Irreg Rhythm

NO TX



Sinus Pause Criteria: (PR, QRS, QT, Rhythm)

PR: 0.12-0.20

QRS: 0.06-0.10

QT: 0.36-0.44

Irregular rhythm

Short Pause: no TX; Long/Freq. Pause & symptomatic = TX like Sinus Brady



Premature Atrial Contraction (PAC)

Heart Rate: Depends on underlying rhythm

Regularity: Interrupts the regularity of underlying rhythm

P-Wave: can be flattened, notched, or unusual. May be hidden within the T wave